

MTL ● MICROSYSTEMS
● TECHNOLOGY
● LABORATORIES

Welcome to the
**MICROSYSTEMS
TECHNOLOGY
LABORATORIES**

A Visitor Guide



Welcome to the Microsystems Technology Laboratories!

A seamless travel experience is a top priority for guests visiting the Microsystems Technology Laboratories (MTL). Our guests bring valuable ideas, and their visit to the MTL Community is an important step towards long-term collaborations, a sense of partnership, and joint innovation with MTL. We hope this travel guide will contribute to a memorable experience and visit to MTL.

You will find information on transportation and how to get around the MIT campus, the nearest hotels with MIT discounted rates, as well as restaurants and things to do in Kendall Square, Cambridge and the greater Boston area.

Sincerely,
Tomás Palacios
MTL Director
Clarence J. LeBel Professor
Department of Electrical Engineering
and Computer Science, MIT

Where to stay.

MIT has several hotels in the campus area, three of which are in Kendall Square below. Kendall Square is about a 5-7 minute walk to MTL.

Boston Marriott Cambridge

2 Cambridge Center
Cambridge, MA 02142
Phone: 617-494-6600
Toll-free: 800-228-9290
Discount Code: MT2

The Kendall Hotel

350 Main Street
Cambridge, MA 02142
Phone: 617-577-1300
Discount Code: MIT

Residence Inn Boston Cambridge

6 Cambridge Center
Cambridge, MA 02142
Phone: 617-494-1885
Toll-free: 800-331-3131
Discount Code: MT2

Find additional hotels near MIT [here](#).

Getting Here & Getting Around.

MTL is located at **50 Vassar Street** in Cambridge, MA.

Parking can be tough at MIT! We recommend public transportation or a taxi/rideshare service (such as Uber or Lyft). If you do drive, when possible, park where you're staying and use public transportation or a taxi/rideshare service to get to campus. If you must drive to campus, on- and off-street parking is available for a fee.

Public Transportation

Subway: From any terminal at Logan Airport, take the Silver Line bus to South Station. At South Station, change to the Red Line subway to Kendall/MIT (inbound toward Alewife). The ride from the airport to MIT should take about 50 minutes.

Bus: The 64, 68, and 85 lines stop near Kendall Square. The #1 bus stops on Massachusetts Avenue, about 1 minute from MTL.

Shuttle: The EZ Ride shuttle runs to and from Boston's North Station, with stops at Kendall Square and around MIT's campus (Note: EZRide is not operated by the MBTA; fare is \$2 cash per trip).

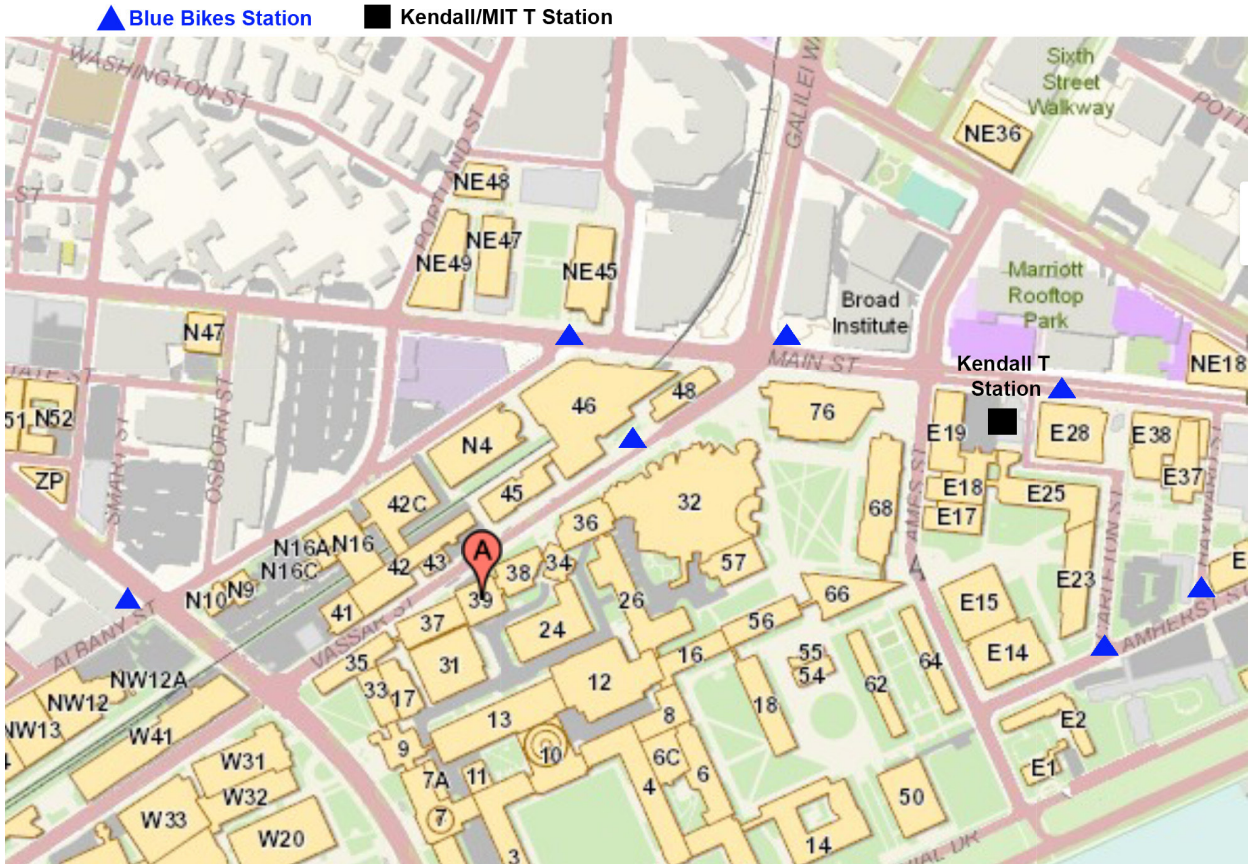
Taxi or rideshare: Taxi fare from the airport is about \$35–\$40, and a rideshare service can range from about \$20–\$35. During non-rush hour, the ride will take about 15 minutes; during rush hour, it may take 30 minutes or more.



Kendall Square

Other Resources:

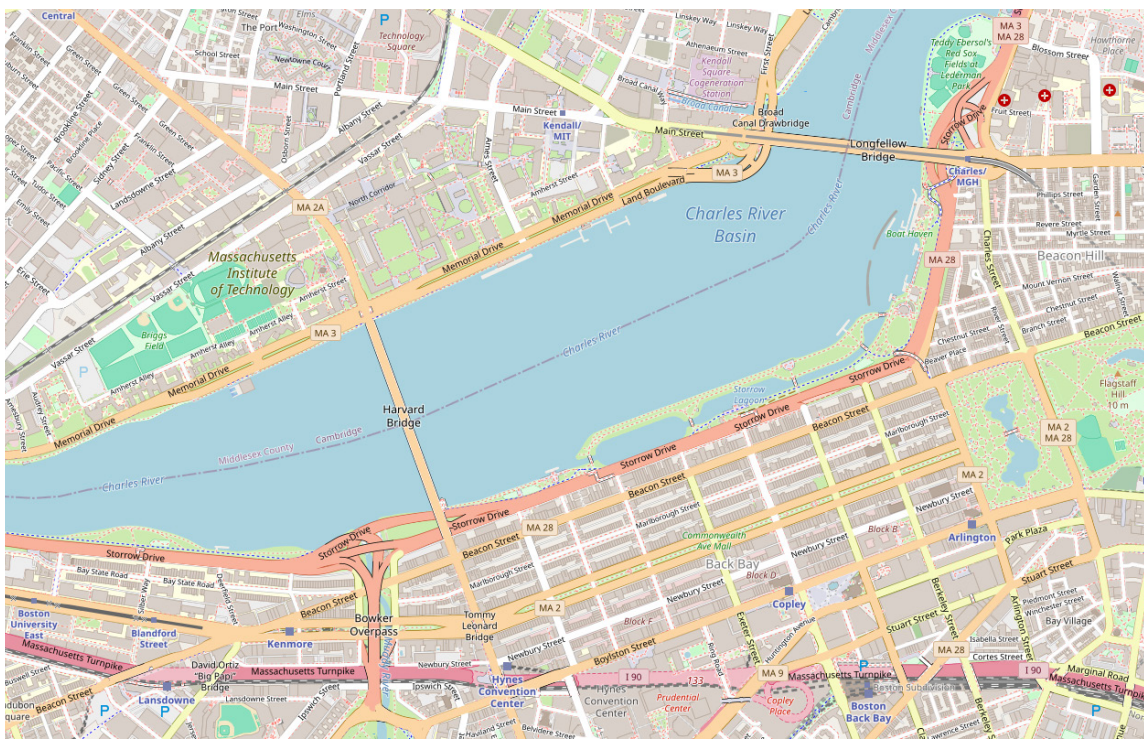
- [Accessibility Map](#)
- [Campus Walking Tour](#)
- [Bluebikes](#) is the Boston area's public bike share program. There are several stations around campus for renting or returning a bike.



Map of MIT Campus - MTL is located at 50 Vassar Street in Buildings 38/39.

MIT Campus Map

To find specific buildings on campus, how to get there, and which departments are located in each building, [use this map](#).



Map of MIT campus in relation to Boston. [Click here](#) for an interactive map.

Where to eat

There are many restaurants and cafes in the area.

The below restaurants are within a 5 minute walk to MTL.

Saloniki Greek [greek]:

www.salonikigreek.com (\$)

Area Four [pizza & breakfast]:

www.areafour.com (\$\$)

Miracle of Science [american]

miracleofscience.us (\$\$)

Catalyst Restaurant [american]:

www.catalystrestaurant.com (\$\$\$)

Sulmona [italian]:

www.sulmonacambridge.com (\$\$\$)

Find more restaurants [here](#).

Quick & easy food options

[Tatte](#) [bakery & cafe]

[Clover](#) [vegetarian fast food]

[Flour](#) [bakery & cafe]

[Toscanini's](#) [ice cream]

Where to explore

-MIT Campus Maps & Self-Guided Tours

<https://whereis.mit.edu/print.html>

-MIT Museum

<http://web.mit.edu/museum>

-Freedom Trail

www.thefreedomtrail.org

-Shopping at MIT COOP

www.thecoop.com/shop-mit

-Duck Tours

www.bostonducktours.com

STAY IN TOUCH!



50 Vassar Street
Building 38, Room 246
Cambridge, MA 02139



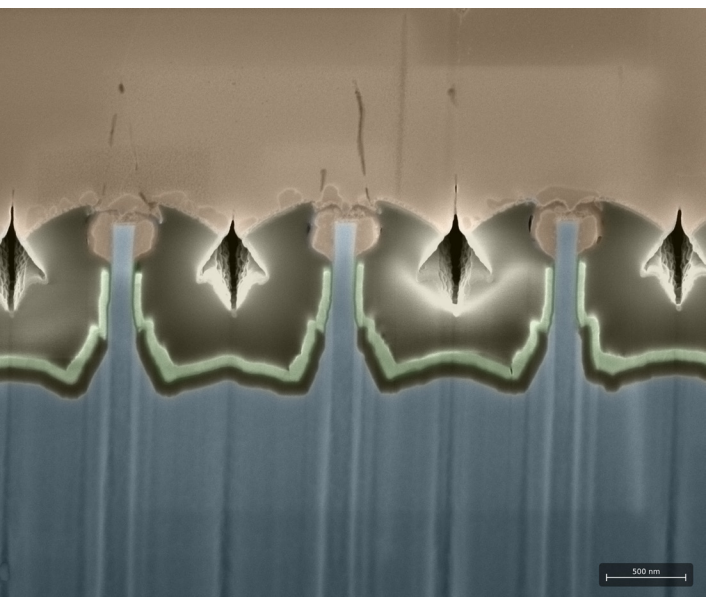
info@mtl.mit.edu
mtl.mit.edu



(617) 253-0573

MTL

● MICROSYSTEMS
● TECHNOLOGY
● LABORATORIES



500 nm